

# Ranelagh Gardens Mansions, SW6



## Ranelagh Gardens Mansions, SW6

This exceptionally well presented flat offers a stunning and fully refurbished interior positioned in this popular mansion block within easy walking distance of Parsons Green and its many shops, bars and restaurants. This fabulous property comprises an open plan reception and fully fitted kitchen with

wooden flooring, two double bedrooms and a modern bathroom with shower over the bath. There is also a communal outside area which holds a table and chairs. Bishops Park is within 200 metres away whilst Putney High Street and its shopping facilities are approximately a 5 minute walk away and Putney Bridge

underground station is less than a minute away.

**Leasehold**  
**£400,000**







**Fulham Road Office:**

793 Fulham Road, London SW6 5HD

**Parsons Green Office:**

40 New King's Road, London SW6 4ST

Tel 00 44 (0)20 7731 3388 Fax 00 44 (0)20 7736 3117

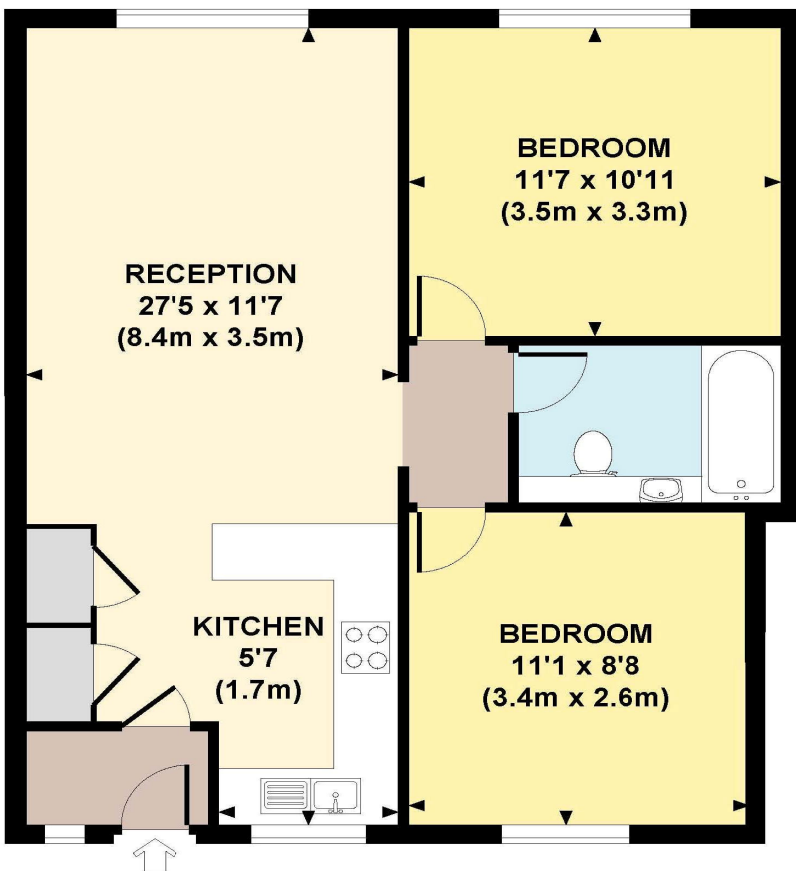
Email [fulham@winkworth.co.uk](mailto:fulham@winkworth.co.uk)[winkworth.co.uk](http://winkworth.co.uk) for thousands of properties to buy and let

# Winkworth

*Professional property services***RANELAGH GARDENS MANSIONS, SW6**

Approx. gross internal area

648 Sq Ft. / 60 Sq M.

**GROUND FLOOR****djd dowing jones**  
design

Every attempt has been made to ensure the accuracy of this floor plan however, measurements are approximate and for illustration purposes only. Not to scale. Photography, floor plans & brochures © 2011 Dowing Jones Design Ltd. [www.dowingjonesdesign.com](http://www.dowingjonesdesign.com) 020 7610 9938 / 07793 974209

NB. These particulars do not constitute, nor constitute any part of, an offer or contract. Measurements, areas and distances referred to in these particulars are given as a guide only and are not exact. If such details are fundamental to a purchase, then purchasers must rely on their own enquiries. Photographs depict only certain parts of the property and it should not be assumed that the property will remain as displayed in the photographs nor that any items displayed are included within the sale. Some details may have changed since these photographs were taken and no assumption should be made with regard to parts of the property not photographed. The displayed square footage is taken from the floor plans which are created by Mays Floorplans with measurements created using the Royal Institute of Chartered Surveyors' Code of Practice for Measuring. These measurements are approximate and included for illustrative purposes only. They create an integral part of the marketing process, and are not a general guide as used in the Energy Performance Certificate which forms part of the Home Information Pack. Where these two measurements vary, Winkworth will always use the square footage assessed under the RICS Code of Practice. Winkworth does not make any representation as to the accuracy of these measurements and you should seek to verify them for yourself. Winkworth accept no liability for any loss you may suffer if you rely on these measurements.

**W525 Printed by Ravensworth 01670 713330**